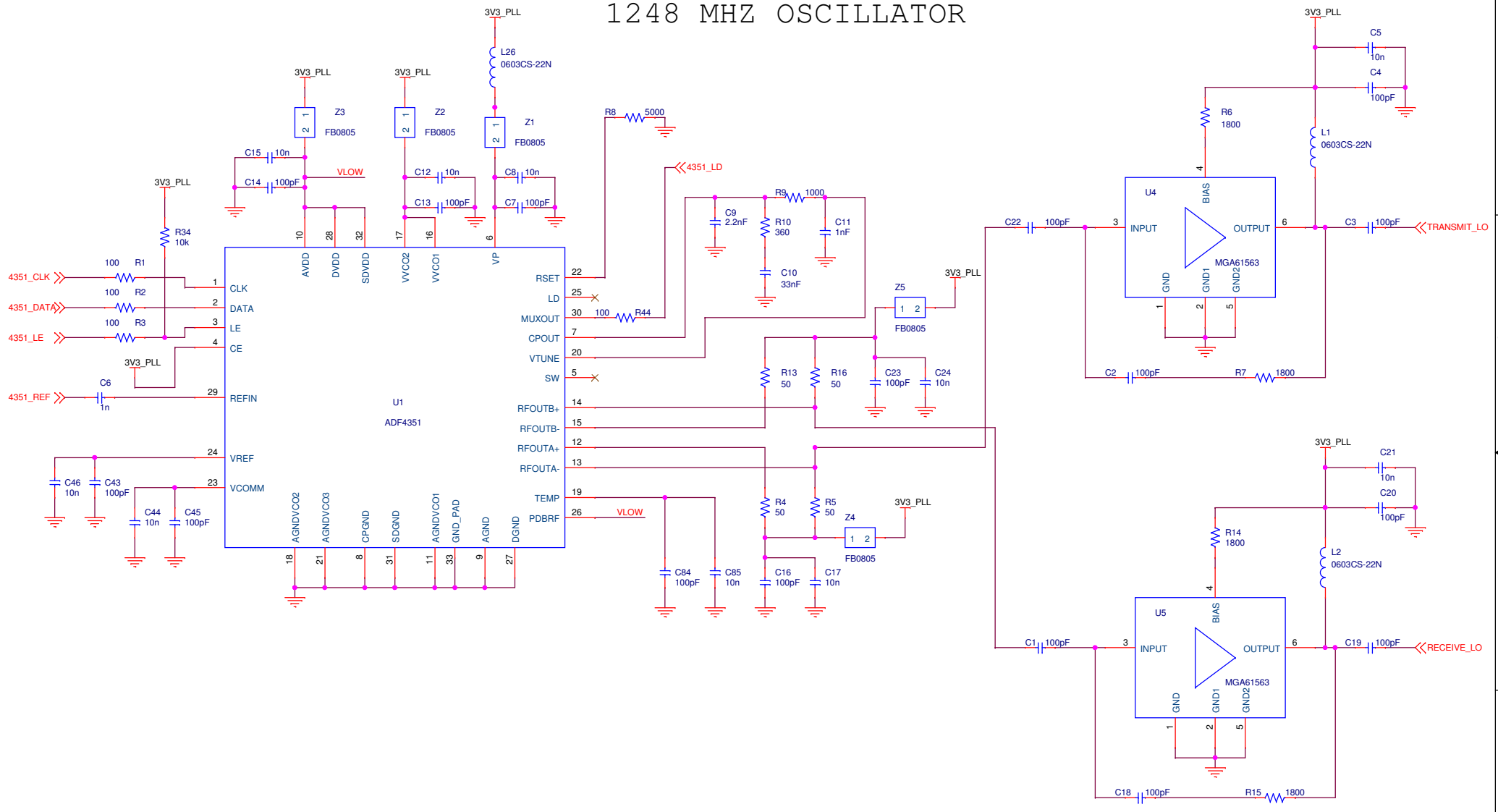
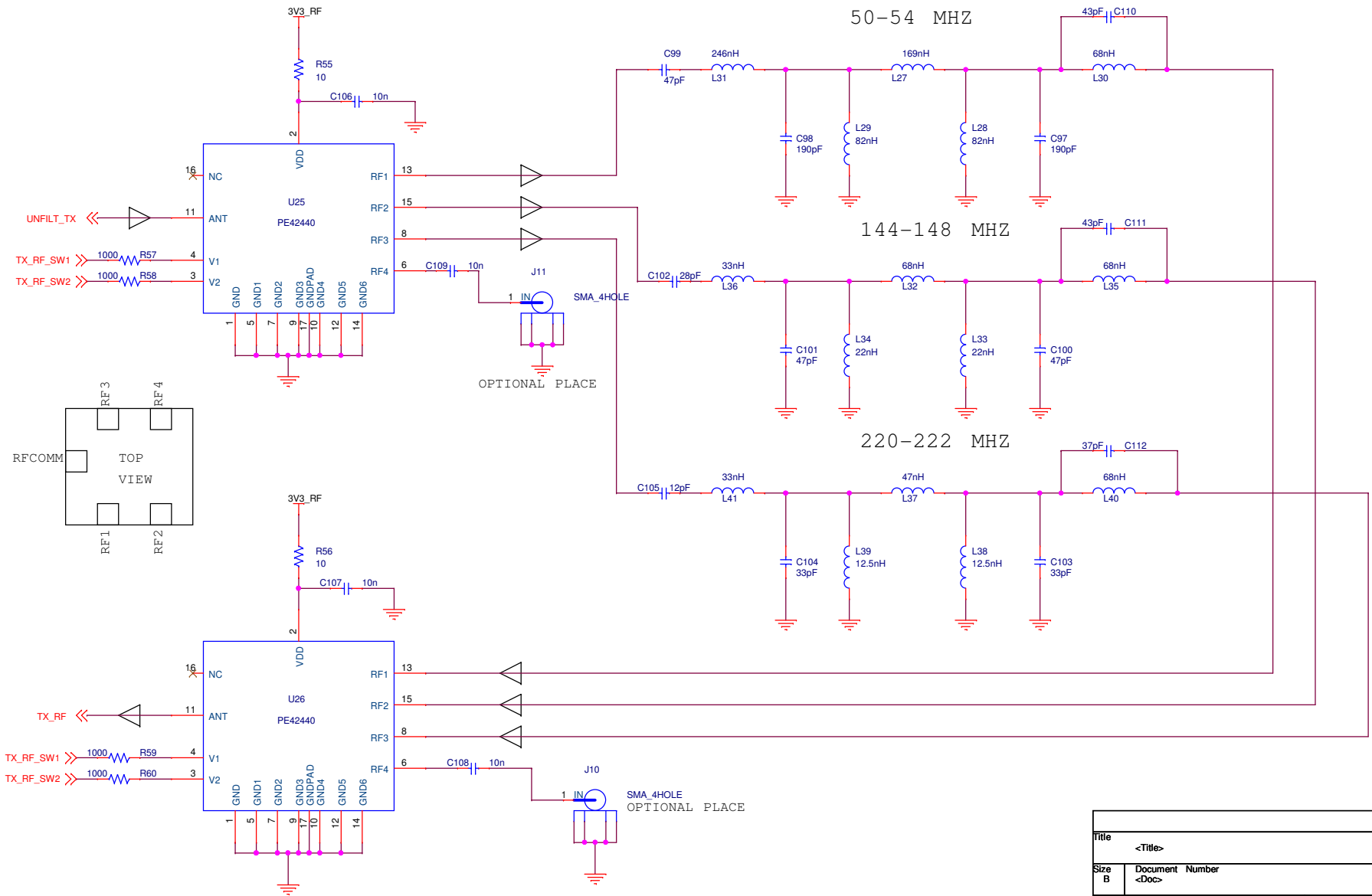


1248 MHZ OSCILLATOR



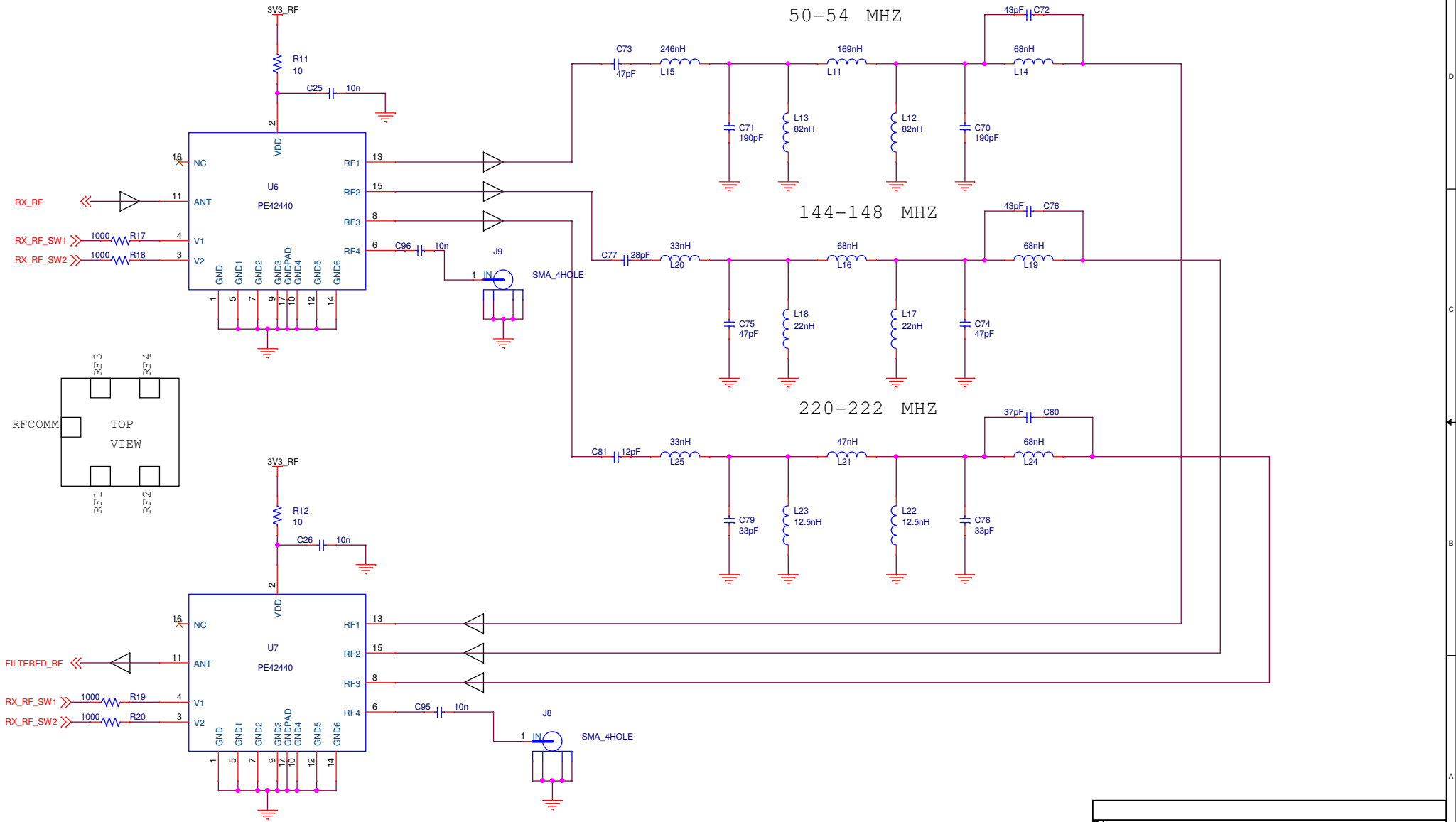
Title	<Title>	
Size	Document Number	Rev
B	<Doc>	<RevCode>
Date:	Tuesday, May 13, 2014	Sheet 1 of 1

VHF TX RF FILTERING



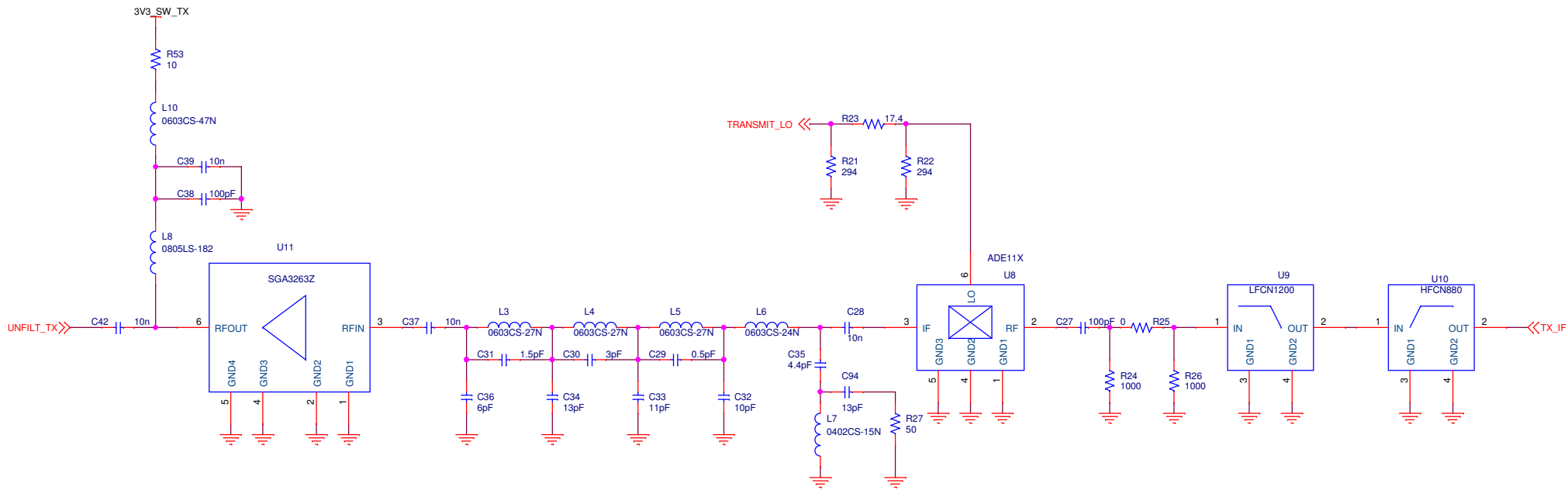
Title	<Title>	
Size	Document Number	Rev
B	<Doc>	<RevCode>
Date:	Tuesday, May 13, 2014	Sheet 1 of 1

VHF RX RF FILTERING



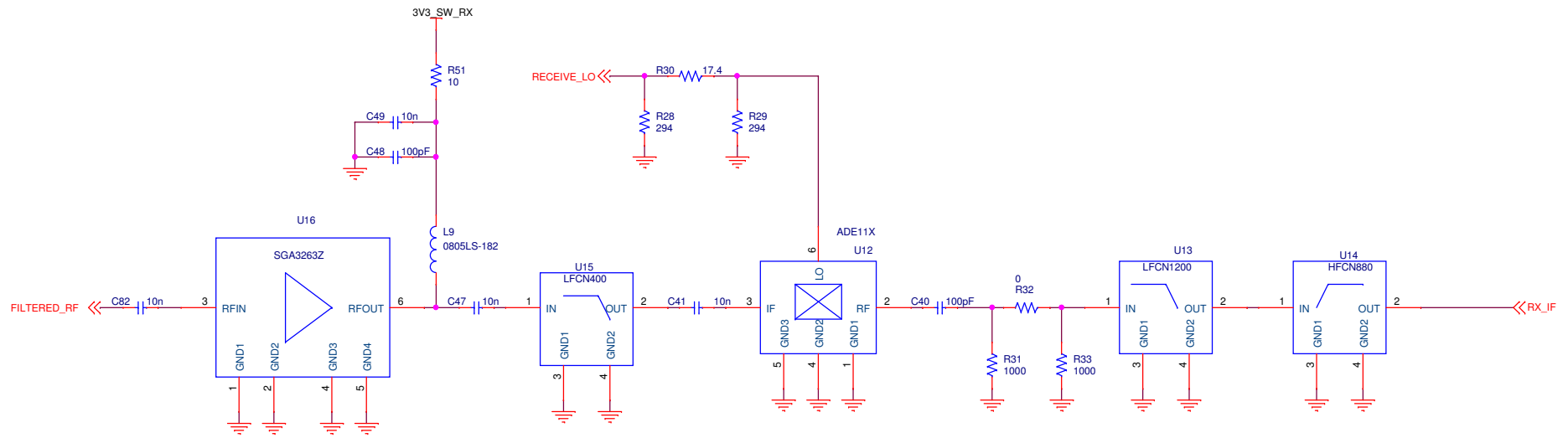
Title		<Title>
Size	Document Number	Rev
B	<Doc>	<RevCod
Date:	Tuesday, May 13, 2014	Sheet 1 of 1

30-300 MHZ TRANSMIT CONVERTER



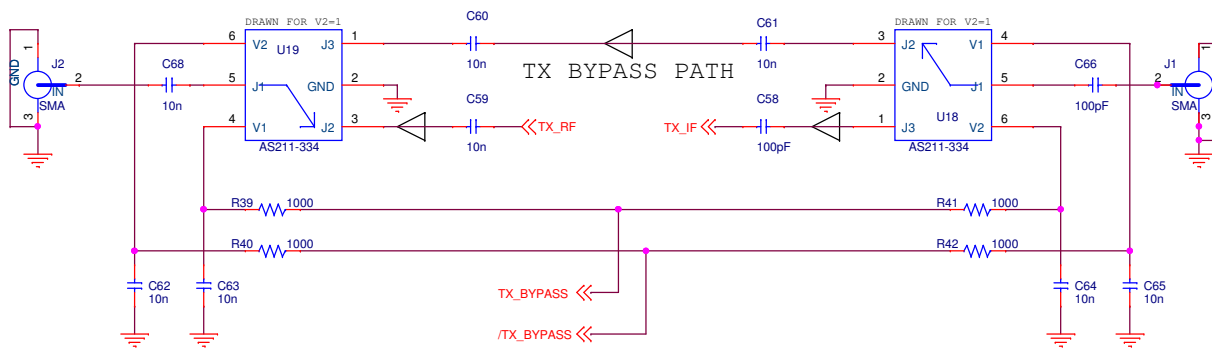
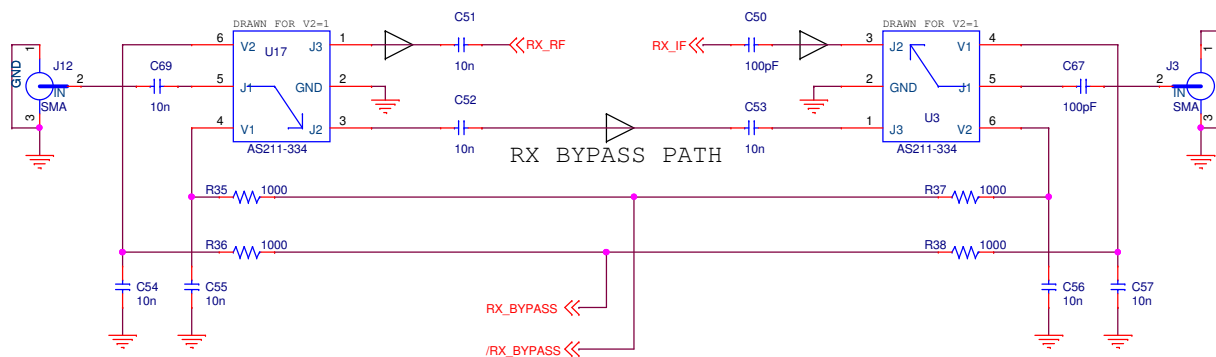
Title	<Title>	
Size	Document Number	Rev
B	<Doc>	<RevCod
Date:	Tuesday, May 13, 2014	Sheet 1 of 1

30-300 MHZ RECEIVE CONVERTER



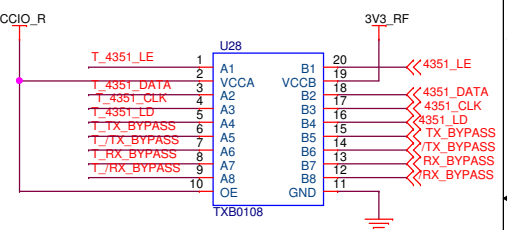
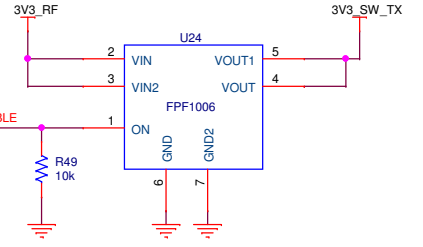
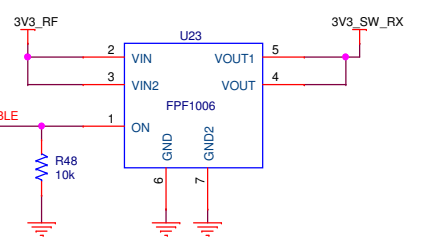
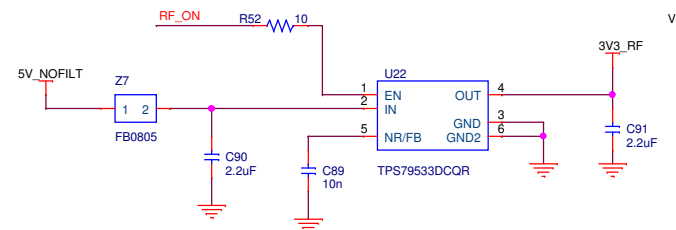
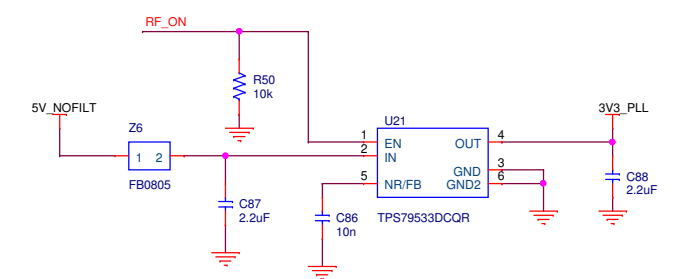
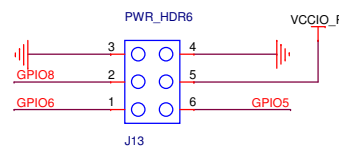
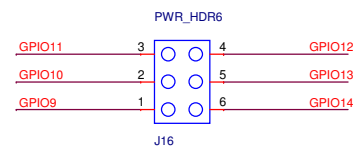
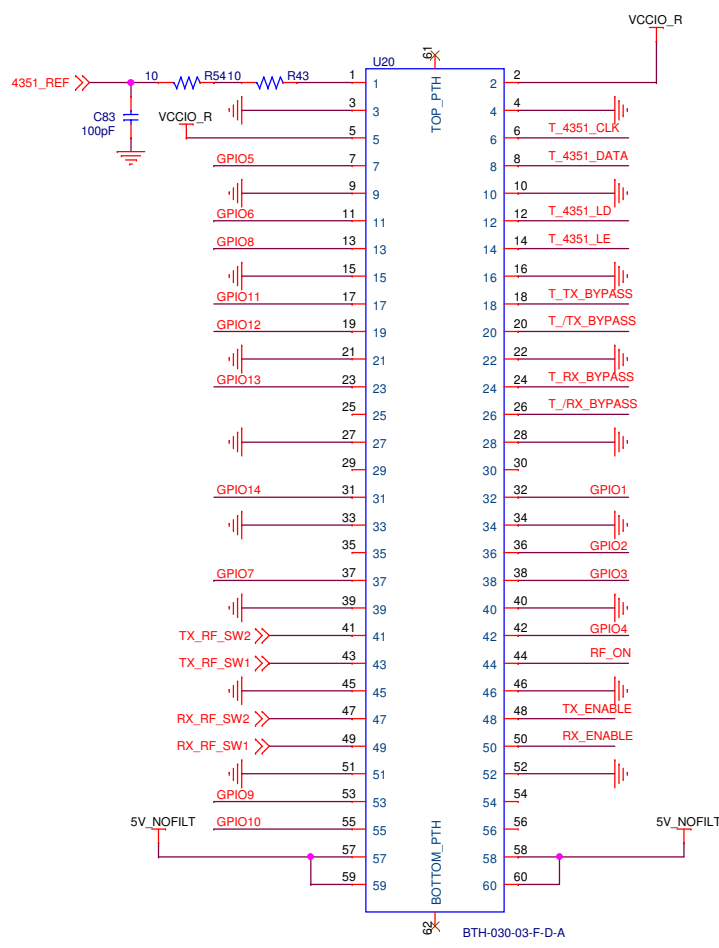
Title		<Title>
Size	Document Number	Rev
B	<Doc>	<RevCod
Date:	Monday, May 12, 2014	Sheet 1 of 1

BYPASS SWITCHING



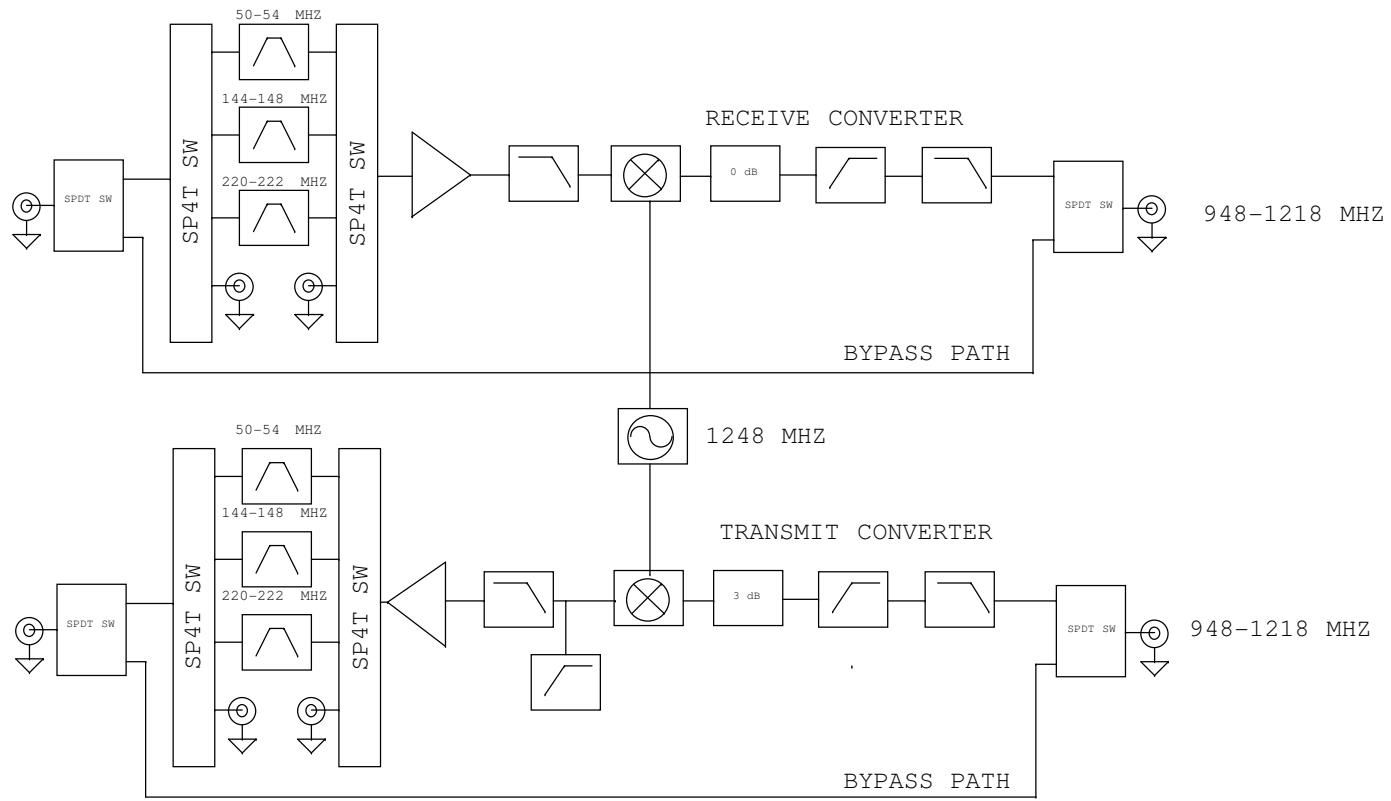
Title	<Title>	
Size	Document Number	Rev
B	<Doc>	<RevCod>
Date:	Monday, May 12, 2014	Sheet 1 of 1

MAIN IO CONNECTOR + LDO'S

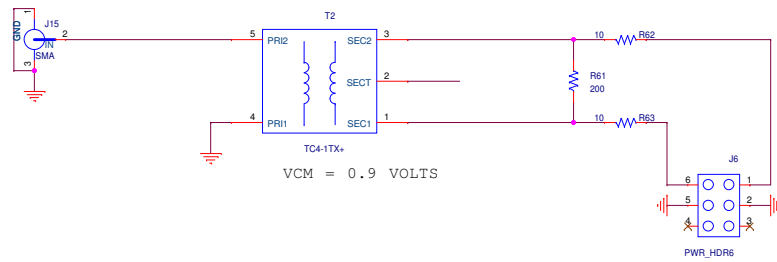
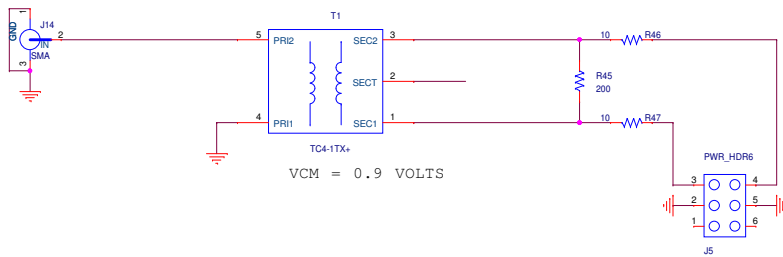


Title	<Title>
Size	<Doc>
Date:	Wednesday, April 16, 2014
Sheet	1 of 1

BLOCK DIAGRAM



Title	<Title>		
Size	Document Number	Rev	<RevCod>
B	<Doc>		
Date:	Wednesday, April 16, 2014	Sheet	1 of 1



Title		
Nuand		
Size	Document Number	Rev
C	<Doc>	A
Date:	Wednesday, April 16, 2014	Sheet 1 of 1